

The World's Leading Industrial Digital Manufacturing Platform

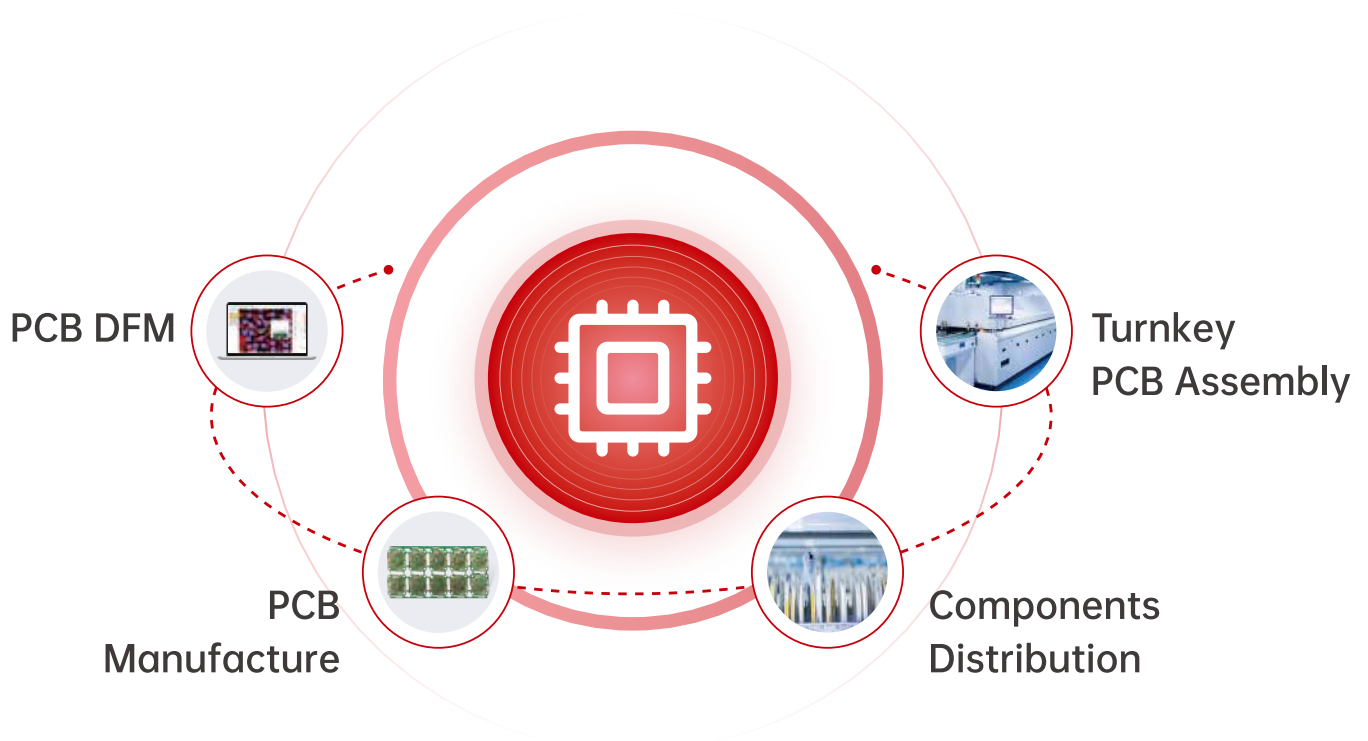


Huaqiu Electronics



About Huaqiu (HQ) Electronics

Founded in 2011, Shenzhen Huaqiu (HQ) Electronics Co. Ltd., is the world's leading industrial digital manufacturing platform for PCB manufacture, PCB assembly, components distribution, and electronics design verification tools. Their passion for reliable, fast and cost-effective electronics manufacturing services has transformed the industry, streamlining the entire production process and allowing production efficiency and cost-savings to reach record highs without compromising on reliability.



MISSION

Transform the traditional electronics manufacturing industry for higher efficiency, reliability, cost-performance and short lead time

CORE VALUES

Integrity - Passion - Innovate - Share - Cooperation - Efficiency

Company History and Outlook

Starting off as a knowledge sharing platform for electronics engineers and hobbyists, HQ Electronics evolved to establish various factories, an online manufacturing platform, MES system and R&D center to serve the electronics industry.

2024

310 Million RMB C+ funding received from Qifu Capital and others, Jiangmen South China Smart Manufacturing Base established

2023

NextPCB becomes Platinum KiCad Sponsor, HQDFM component library surpasses 3 million

2022

Changsha SMT factories operational, 12,000m² Central China storage center built, HQDFM new version released

2021

Significant investment from Hillhouse, Shunwei, and Joy Capital in C+ funding rounds

2020

HQDFM launched and partnered with Huawei's Harmony OS Hardware Ecosystem

2015-2016

Investment received from Qifu Capital and Jufeng

2014

Components mall launched

2017

Shenzhen PCB factory triples production capacity

2018

Jiujiang 140,000m² PCB Industrial Park commences production

2019

NextPCB platform launched, 5,000m² SMT factory and storage center established

2013

Shenzhen Shajing PCB factory begins production

2012

Huaqiu PCB platform launched

2011

Acquired by Huaqiang Group, Shenzhen Huaqiang Jufeng established

2009

Elecfans platform launched (Changsha)

SINCE

HQ Electronics' International Services

HQ NextPCB and HQ Online are the international divisions of HQ Electronics, connecting engineers and businesses around the world with HQ Electronics' decades of mature Chinese manufacturing expertise and resources.

The localized versions of the free revolutionary HQDFM software and online HQDFM Gerber Viewer allow global users to gain valuable insights into their PCB designs before handing off to manufacture.

NextPCB

HQ Electronics has served national engineers for over 15 years, becoming a household name in providing full-feature multilayer PCBs and PCB assembly services engineers can trust. NextPCB brings these capabilities, speed, affordability and more to clients in over 160 countries.

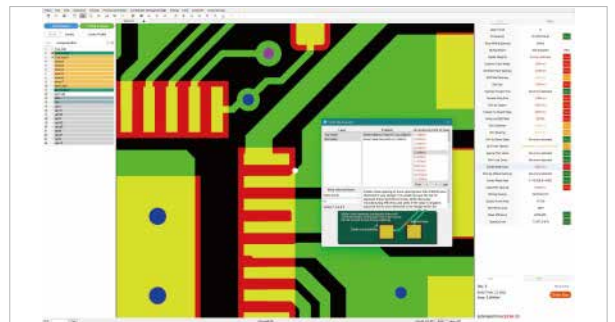


HQ online www.hqonline.com

HQ Online is HQ Electronics' global components distributor, providing over 600,000 in-stock components from over 3000 Asian and international brands. HQ Online's highly competitive prices are testament to HQ Electronics' exceptional procurement abilities and strong supply network.

HQDFM nextpcb.com/dfm

Utilizing 15 years of in-house factory-floor expertise, HQ Electronics developed the multi-award winning Design for Manufacturing software suite HQDFM, revolutionizing how circuit board designers visualize and verify their designs from an electronics manufacturing standpoint.



Why HQ Electronics?

The Industry's experts

HQ Electronics boasts a workforce of over 1500 skilled technicians, project managers, software developers, sales and customer service personnel with an average of over 5 years experience in the electronics manufacturing industry.

For all electronics manufacturing needs

With 5 major factories, components distribution facilities and a robust supply chain network, HQ Electronics is tailored to providing complete electronics manufacturing solutions from prototype to mass production.

We are the factory

HQ Electronics is the factory, ensuring you get the best prices, lead times and technical assistance.

Leading and trusted platform

HQ Electronics dominates the Chinese electronics manufacturing ecosystem with over 6 million users and a private company valuation of \$1.5 billion US dollars. HQ Electronics supports electronics engineering communities by sharing knowledge and resources, holding public events and performing outreach activities including sponsoring open-source projects such as KiCad.

OUR CUSTOMERS



Applications



Automotive



Security



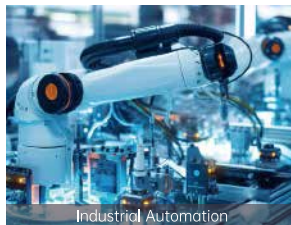
Internet of Things (IoT)



Telecommunications



Medical and Biosciences



Industrial Automation



Consumer Electronics



Renewable Energy



PCB Manufacture

The go-to solution for multilayer PCBs
that last a lifetime



HQ Electronics runs two PCB factories, one catered to prototype and small batch PCB production, and the new mass production center constructed in 2019. For over 10 years, HQ Electronics has provided fast and affordable PCBs to engineers and businesses, becoming a household name for reliable multilayer PCBs.

HQ Electronics built its PCB production facilities from the ground up, adopting Industry 4.0 principles and developing their own MES system for smart production and traceability.

High Reliability

Shengyi/KB A-grade materials
Advanced Equipment
Rigorous Quality Control

Fast Turnaround

From 24 hours turnaround
99.59% on-time delivery

Precise Manufacturing

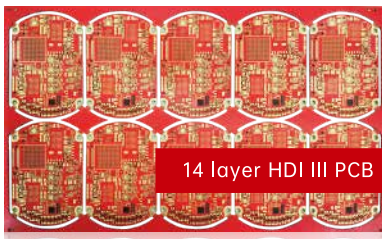
Complete traceability
Full AOI + flying Probe testing
98% first time pass rate
Only deliver fully qualified boards

• HQ Electronics Jiujiang PCB Factory and Industrial Park

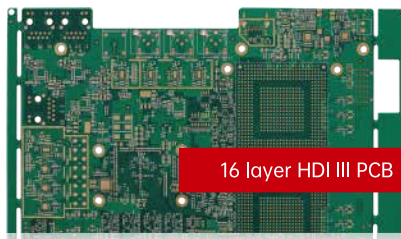
Advanced PCB Manufacture Capabilities

HQ Electronics PCB manufacturing capabilities include up to 32 layer boards, blind and buried vias up to HDI 3, custom stack-ups, impedance control, chamfering and more. We use materials and equipment recognized world-wide for their high quality and cost-performance including Kingboard and Shengyi laminates, Cerambus plating solutions and TAIYO solder mask solutions.

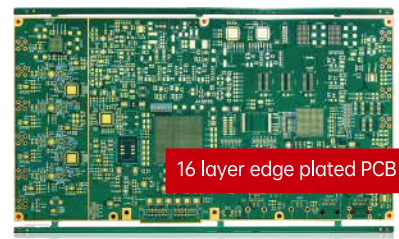
	Instant Quote	Inquire for a quotation
Circuit Layers	Up to 20 layers	Up to 32 layers
HDI Capability	Up to HDI III designs	Inquire
Materials	Shengyi/KB cores and laminates up to TG170	Rogers, flex, rigid-flex, aluminum, copper core and more
Surface Finishes	Leaded/Lead-free HASL, ENIG and OSP	Inquire
Board Thickness	0.6 to 3.2 mm	Inquire
Copper Thickness	4 oz	Inquire
Smallest Trace width/spacing	3.5/3.5 mil	2.5/2.5 mil
Drill and Via Capabilities	Blind/buried vias, Microvias, Via-in-pad filling and capping (POFV) and castellated holes.	Counterbore, countersunk holes, z-axis milling, 20:1 aspect ratio and more
PCB Solder Mask Color	Green, blue, red, yellow, white, black, matte black	Inquire
Extras	Custom stack-up, impedance control, microsection report, UL Marking, beveled/chamfered edges, edge-plating and more	Inquire
Production Time	From 24 hours	Inquire



14 layer HDI III PCB



16 layer HDI III PCB



16 layer edge plated PCB



Design for Manufacture (DFM) Review



Inner and Outer Layer AOI Inspection



Flying Probe In-Circuit Test (ICT)



Impedance Control and Microsection Analysis

[Inquire for more advanced PCB specifications and requirements](#)

PCB Factory Showcase

Guangdong Shenzhen Factory

Prototype and small batch PCB production



- 10,000m² floor space
- 230 employees including 32 engineers and 30 quality assurance technicians
- Production capacity: 20,000 square meters a month
- HDI Interconnect capability up to HDI III
- Quickturn production from 24 hours



Flying Probe Testing Room



Vertical Continuous Plating (VCP) Line



Automated Mechanical Drilling Room



HQ Engineering Service Centre



Shenzhen Production Team



Electroplating Line

Jiangxi Jiujiang Factory

Mass production PCB production



- 140,000m² Industrial Park
- 350 employees including 20 engineers and 50 quality assurance technicians
- Production capacity: 100,000 square meters per month
- Fully automated state of the art production facilities established in 2019



Lamination Press Line



Flying Probe Testing room



Electroplating Line



Exposure and Imaging Room



Jiujiang Production Team



Pretreatment and Etching Line

Our Equipment

Mechanical/Laser Drill Hole



Mitsubishi Electric (Japan) GTW5
Series Laser Drilling Machine



Hans Laser Mechanical Drilling Machines



AbleTek (Taiwan) ADT-900XP2 X-ray
Guided Drilling Machine

Copper Processing



UCE Group Brown Oxide Line



UCE Group Horizontal Deburr, Desmear and
Electroless Plating Line



Commend Machinery (Taiwan) Electroplating
Line

Solder mask, surface finish and mechanical processing



DP-OPT Equipment Inline Automatic Solder
Mask Application Machine



UCE Group HASL Surface Finish Processing Line



GRUIPCB Fully Automatic CNC V-Cut Machine

Quality Assurance



m&p International (Germany) Bed of Nails Test
Rig



Optima DS Series Inline Double-sided AOI
Inspection Machine

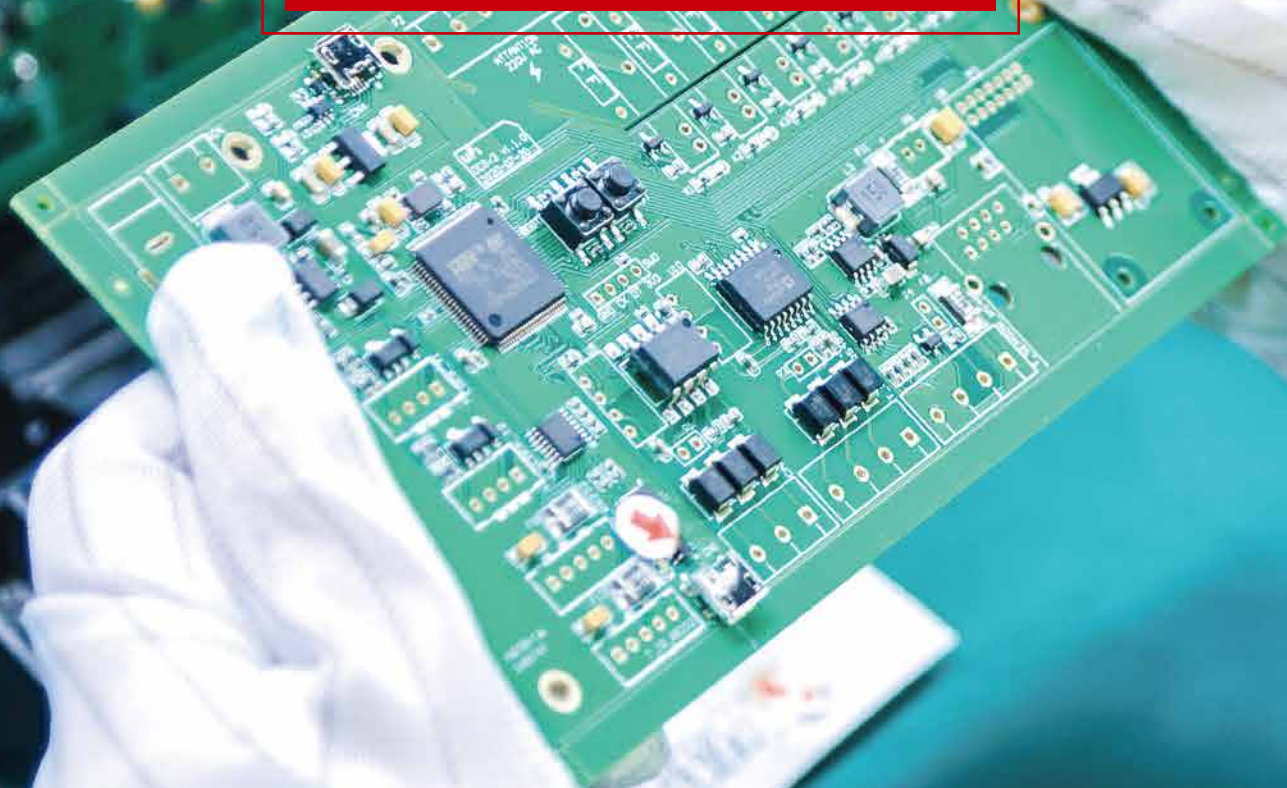


Joint Stars Imagine AVI Series Automated
Visual Inspection (AVI) Machine



Turnkey PCB Assembly

Full-feature smart turnkey
PCB assembly



Industry Leading Service, Quality and Capabilities

Complete full-feature turnkey PCB assembly for all requirements from prototyping to mass production including reliable PCB manufacture, parts sourcing and assembly with Design for Assembly (DFA) review.

Take advantage of superior global parts sourcing capabilities, or choose from 600k in-stock parts for expedited PCB assembly from 7 working days.

AOI, x-ray inspection, conformal coating, functional testing and FCC/CE certification services are also available. Talk to us about your needs and we'll tailor our services to you.

01

PCB Types

Rigid PCBs (FR4, Aluminum)
Flex PCBs
Rigid-flex PCBs

Solder Type

Lead-free RoHS compliant solder

04

02

Assembly Types

Surface mount assembly (SMT)
Through-hole assembly (THT)
Mixed (SMT+THT)
Single/Double sided assembly
Automated/Manual soldering

Component Types

0.25mm pitch BGAs
0.25mm pitch fine-pitch parts
01005 (0402) chip size parts

05

03

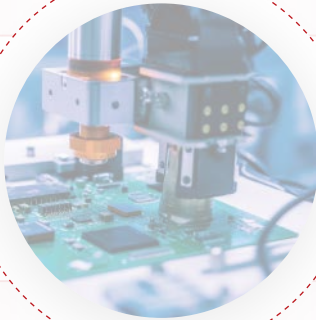
Production Volume

No MOQ. From one piece to mass production volumes

Assembly Leadtime

From 24 hours once all parts are ready

06



Functional Testing, Certification and Engineering Services

FUNCTIONAL TESTING SERVICES

Ensure every device works off the production line and into customers' hands with 100% functional testing and effectively reduce the defect rate to zero. Or sample test to verify the entire turnkey process and identify catastrophic issues early on.

Test procedures can be as complex as full software-enabled EOL testing to a simple power-up test.

ENVIRONMENTAL TESTING SERVICES

Verify your products can keep performing out in the field with stress tests and withstand temperature extremes, humid and high pressure environments etc

Free Engineering Design for Assembly Review (DFA)

Get a second expert opinion and reduce production pitfalls with the thorough DFA review from HQ Electronics engineers.

- Footprint verification
- Panel design and component spacing
- BOM inconsistencies
- Common assembly problems

FCC/CE CERTIFICATION ASSISTANCE

Get assistance with obtaining FCC compliance, CE and other certifications such as UL and RoHS for your products.

FIRMWARE FLASHING SERVICES

Hand over the tedious task of microcontroller programming to HQ Electronics:

- Test jig and fixture support
- IC Programming
- Engineering support



Enterprise Services Tailored to your Business

One-on-one Account Manager

Communicate all your needs to your specialized team via your dedicated account manager.

Complete Box Build Services

Minimize costs and let HQ Electronics handle everything from enclosure production, kitting, printing, cabling and certification.

Superior Procurement Services

Let HQ Electronics find you the best prices, find hard-to-source parts and act as your purchasing agent on your behalf.

Pre-purchase Service

Beat price fluctuations and stock shortage by pre-purchasing components and have them stored in HQ Electronics' facilities.

Flexible Net 30 Days Payment Terms

Choose the payment term that suits your business.

Factory Audit Assistance

We welcome visits to evaluate our facilities and processes.

“

We have contracted NextPCB twice now to make some high specification 6-layer prototypes, both times NextPCB have exceeded our expectations and produced the assembled PCBs to the same quality as our volume production house. We enjoyed working with Julia who is a very experienced engineer and made the whole process as pain free as possible.

We will definitely use NextPCB for other jobs and are happy to have found them.

Embedded Micro Technology



Start your journey with HQ Electronics today
Reach out to vipsales@nextpcb.com

PCB Assembly Factory Showcase

Guangdong Dongguan Factory

Prototype and small batch PCB assembly



- 8000m² factory floor space
- 5000m² components warehouse
- Over 150 employees including 14 project leads and 20 quality assurance personnel.



SMT Assembly Lines



Through-hole Insertion Line



Wave Soldering Line



Manual Soldering and Assembly Line



Dongguan Production Team



ASM SIPLACE SMT Assembly Lines

Hunan Changsha Factory

Mass production PCB assembly



- 12000m² factory floor space
- 12000m² components warehouse
- Over 450 employees including 30 project leads 52 quality assurance personnel.



ASM Siplace SMT Assembly Lines



Incoming Parts Inspection (IQC)



Manual Soldering Stations



Components Warehouse



Changsha Production Team



Wave Soldering Line

Our Equipment

Production



ASM (SIEMENS) E by SIPLACE Pick & Place Machine



Continuous Wave Soldering Machine



JT JTR-1000D SMT Reflow Oven



Zhenxun ZX-CP300 BGA Rework Station



AUTOCK AT-320 Automatic Optical Depaneling Machine



Right ASE Fully Automated Solder Paste Printer

Quality Inspection



ALeader ALD-ST2-300I Solder Paste Inspection Machine



TFT TFT350 First Article Inspection (FAI) Tester



Jutze Pre & Post Reflow AOI Machine

Testing and additional services



SCIENSCOPE VIEW X2000 BGA X-ray Inspection Machine

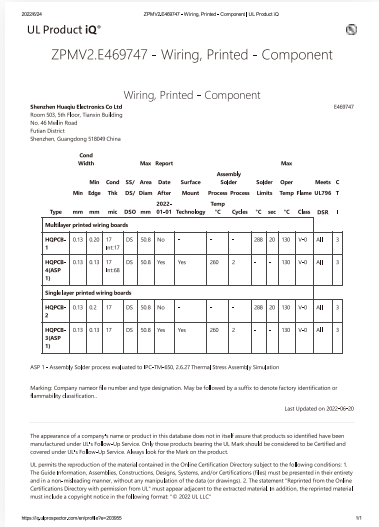
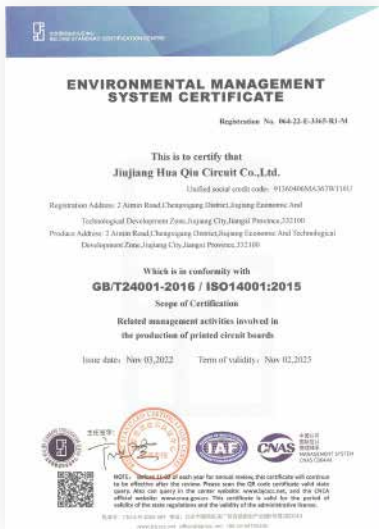


HR Precision High Temperature Test Chamber



Anda Automation Conformal Coating machine and Infrared (IR) Curing Oven

PCB and PCBA Certifications





Electronic Components Distributor

Leading electronic components distributor
based in the Silicon Valley of hardware

One of China's largest Distributors of Electronics Components based in the Silicon Valley of Hardware, Shenzhen, HQ Online leverages a mature supply chain to provide some of the industry's lowest prices from trustworthy sources.

In addition, HQ Electronics offers seamless procurement from major distributors including **Digikey, Mouser, Element14, Arrow, Verical, Avnet, RS Components, Rochester Electronics** and more thanks to smart integrations and established global procurement infrastructure.

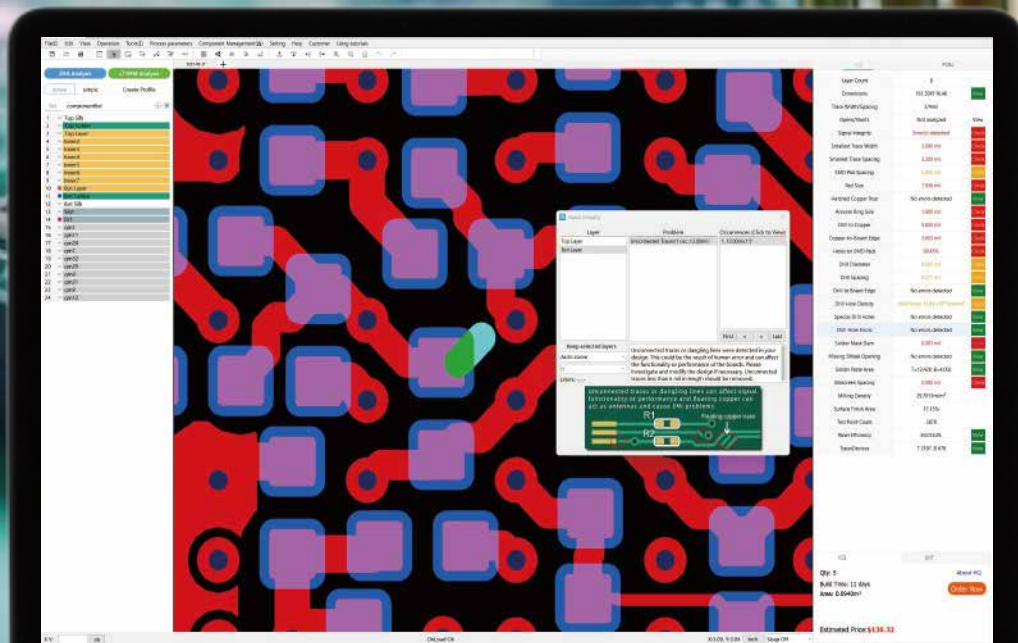
- **Over 600,000 parts from 3000+ Asian and global brands** in stock now for fast delivery
- **Industry competitive prices** thanks to a mature supply chain and procurement capabilities. Straight from the manufacturer or batch prices
- **Authenticity Guaranteed.** Fakes, second-hand and refurbished parts are strictly forbidden





PCB DFM

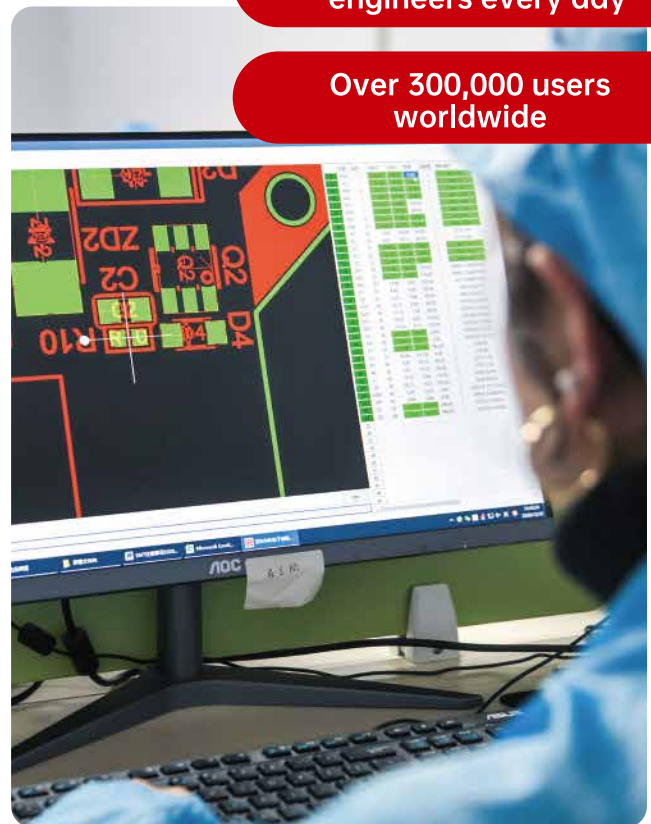
Free PCB Design for Manufacture
analysis tool



Free Unlimited Design for Manufacture (DFM) Review and more at your fingertips

HQDFM analyzes Gerber files or ODB++ files for over 20 different types of DFM problems with a single-click, and provides actionable feedback designers can use to improve board reliability and data clarity, minimizing wastage and maximizing product lifetime.

- 01 Check for over 20 different PCB design for Manufacture problems with one click.
- 02 New Design for Assembly (DFA) features including BOM and footprint checker and over 150 detailed DFA checks.
- 03 Inbuilt tools for designers including quick panelization tool, impedance calculator, BOM and Gerber comparison tools and IPC Netlist tools.
- 04 Supports Gerber RS-274x, X2 and ODB++ files.
- 05 Instant pricing and fast-track ordering provided by HQ NextPCB.



Used by HQ NextPCB's engineers every day

Over 300,000 users worldwide

Unlike EDA Design Rule Checks (DRC), HQDFM analyzes the Gerber files and compares them against the capabilities of manufacturers across the industry. HQDFM uses this insight to warn when a potential violation may incur additional costs or impact board reliability, something manufacturers are not obliged to report to customers.

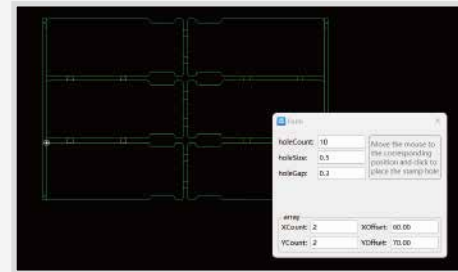
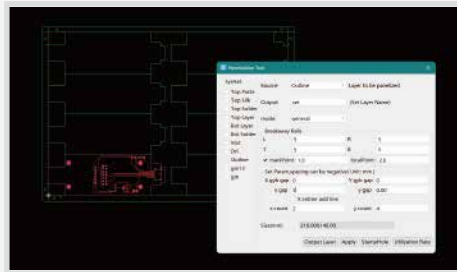
DFM Analysis



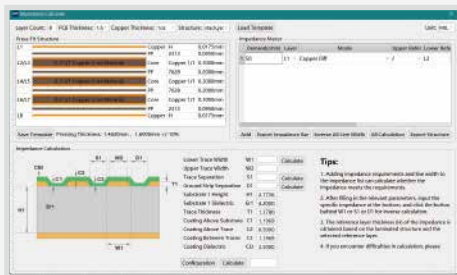
PCB Parameter Extraction

PCB			PCBA		
Layer Count	8				
Dimensions	161.39X116.46	View			
Trace Width/Spacing	3/4mil				
Opens/Shorts	Not analyzed	View			
Signal Integrity	Error(s) detected	Check			
Smallest Trace Width	3.000 mil	Check			
Smallest Trace Spacing	3.200 mil	Check			

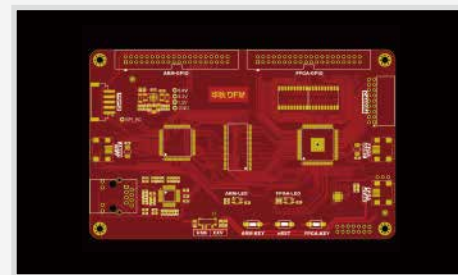
PCB Panelization Tool with stamp hole/tab function



Impedance Calculator



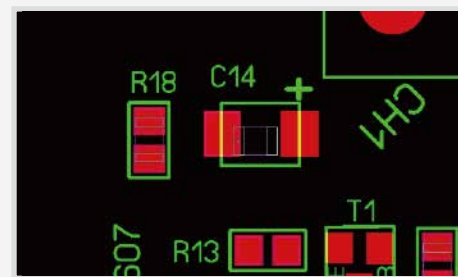
Realistic View



DFA Analysis



Smart Footprint Checker



BOM Checker

Search Comp										Enter tag number	Help	Draw Component	Match Config Setting	Output Bom	Download Report
K	L	M	N	O	P	Descr	R	Bom Check Result	Operation						
40	0.00609	2.88	12-20			Not...		no errors	Check E						
40	0.00941	2.88	12-20			Not...		no errors	Check E						
40	0.02644	1.06	12-20			Not...		no errors	Check E						
250	0.00218	0.55	12-20 Days			Not checked		Wrong no. of designators Actual quantity: 19 Repeated Designator B42	Check E						
210	0.00009	0.19	0			Not checked		Wrong no. of designators Actual quantity: 9 Repeated Designator B42	Check E						
40	0.00007	1.04	12-20			Not checked		no errors	Check E						

Centroid File Editor

FileEditViewToolsHelp

Project: **01-01-2024**

Board: **01-01-2024**

Component: **01-01-2024**

Library: **01-01-2024**

Board: **01-01-2024**

Component: **01-01-2024**

Library: **01-01-2024**

Board: **01-01-2024**

Component: **01-01-2024**

Library: **01-01-2024**

Board: **01-01-2024**

Component: **01-01-2024**

Library: **01-01-2024**

Board: **01-01-2024**

Component: **01-01-2024**

Library: **01-01-2024**

Board: **01-01-2024**

Component: **01-01-2024**

Library: **01-01-2024**

Board: **01-01-2024**

Component: **01-01-2024**

Library: **01-01-2024**

Board: **01-01-2024**

Component: **01-01-2024**

Library: **01-01-2024**

Board: **01-01-2024**

Component: **01-01-2024**

Library: **01-01-2024**

Board: **01-01-2024**

Component: **01-01-2024**

Library: **01-01-2024**

Board: **01-01-2024**

Component: **01-01-2024**

Library: **01-01-2024**

Board: **01-01-2024**

Component: **01-01-2024**

Library: **01-01-2024**

Board: **01-01-2024**

Component: **01-01-2024**

Library: **01-01-2024**

Board: **01-01-2024**

Component: **01-01-2024**

Library: **01-01-2024**

Board: **01-01-2024**

Component: **01-01-2024**

Library: **01-01-2024**

Board: **01-01-2024**

Component: **01-01-2024**

Library: **01-01-2024**

Board: **01-01-2024**

Component: **01-01-2024**

Library: **01-01-2024**

Board: **01-01-2024**

Component: **01-01-2024**

Library: **01-01-2024**

Board: **01-01-2024**

Component: **01-01-2024**

Library: **01-01-2024**

Board: **01-01-2024**

Component: **01-01-2024**

Library: **01-01-2024**

Board: **01-01-2024**

Component: **01-01-2024**

Library: **01-01-2024**

Board: **01-01-2024**

Component: **01-01-2024**

Library: **01-01-2024**

Board: **01-01-2024**

Component: **01-01-2024**

Library: **01-01-2024**

Board: **01-01-2024**

Component: **01-01-2024**

Library: **01-01-2024**

Board: **01-01-2024**

Component: **01-01-2024**

Library: **01-01-2024**

Board: **01-01-2024**

Component: **01-01-2024**

Library: **01-01-2024**

Board: **01-01-2024**

Component: **01-01-2024**

Library: **01-01-2024**

Board: **01-01-2024**

Component: **01-01-2024**

Library: **01-01-2024**

Board: **01-01-2024**

Component: **01-01-2024**

Library: **01-01-2024**

Board: **01-01-2024**

Component: **01-01-2024**

Library: **01-01-2024**

Board: **01-01-2024**

Component: **01-01-2024**

Library: **01-01-2024**

Board: **01-01-2024**

Component: **01-01-2024**

Library: **01-01-2024**

Board: **01-01-2024**

Component: **01-01-2024**

Library: **01-01-2024**

Board: **01-01-2024**

Component: **01-01-2024**

Library: **01-01-2024**

Board: **01-01-2024**

Component: **01-01-2024**

Library: **01-01-2024**

Board: **01-01-2024**

Component: **01-01-2024**

Library: **01-01-2024**

Board: **01-01-2024**

Component: **01-01-2024**

Library: **01-01-2024**

Board: **01-01-2024**

Component: **01-01-2024**

Library: **01-01-2024**

Board: **01-01-2024**

Component: **01-01-2024**

Library: **01-01-2024**

Board: **01-01-2024**

Component: **01-01-2024**

Library: **01-01-2024**

Board: **01-01-2024**

Component: **01-01-2024**

Library: **01-01-2024**

Board: **01-01-2024**

Component: **01-01-2024**

Library: **01-01-2024**

Board: **01-01-2024**

Component: **01-01-2024**

Library: **01-01-2024**

Board: **01-01-2024**

Component: **01-01-2024**

Library: **01-01-2024**

Board: **01-01-2024**

Component: **01-01-2024**

Library: **01-01-2024**

Board: **01-01-2024**

Component: **01-01-2024**

Library: **01-01-2024**

Board: **01-01-2024**

Component: **01-01-2024**

Library: **01-01-2024**

Board: **01-01-2024**

Component: **01-01-2024**

Library: **01-01-2024**

Board: **01-01-2024**

Component: **01-01-2024**

Library: **01-01-2024**

Board: **01-01-2024**

Component: **01-01-2024**

Library: **01-01-2024**

Board: **01-01-2024**

Component: **01-01-2024**

Library: **01-01-2024**

Board: **01-01-2024**

Component: **01-01-2024**

Library: **01-01-2024**

Board: **01-01-2024**

Component: **01-01-2024**

Library: **01-01-2024**

Board: **01-01-2024**

Component: **01-01-2024**

Library: **01-01-2024**

Board: **01-01-2024**

Component: **01-01-2024**

Library: **01-01-2024**

Board: **01-01-2024**

Component: **01-01-2024**

Library: **01-01-2024**

Board: **01-01-2024**

Component: **01-01-2024**

Library: **01-01-2024**

Board: **01-01-2024**

Component: **01-01-2024**

Library: **01-01-2024**

Board: **01-01-2024**

Component: **01-01-2024**

Library: **01-01-2024**

Board: **01-01-2024**

Component: **01-01-2024**

Library: **01-01-2024**

Board: **01-01-2024**

Component: **01-01-2024**

Library: **01-01-2024**

Board: **01-01-2024**

Component: **01-01-2024**

Library: **01-01-2024**

Board: **01-01-2024**

Component: **01-01-2024**

Library: **01-01-2024**

Board: **01-01-2024**

Component: **01-01-2024**

Library: **01-01-2024**

Board: **01-01-2024**

Component: **01-01-2024**

Library: **01-01-2024**

Board: **01-01-2024**

Component: **01-01-2024**

Library: **01-01-2024**

Board: **01-01-2024**

Component: **01-01-2024**

Library: **01-01-2024**

Board: **01-01-2024**

Component: **01-01-2024**

Library: **01-01-2024**

Board: **01-01-2024**

Component: **01-01-2024**

Library: **01-01-2024**

Board: **01-01-2024**

Component: **01-01-2024**

Library: **01-01-2024**

Board: **01-01-2024**

Component: **01-01-2024**

Library: **01-01-2024**

Board: **01-01-2024**

Component: **01-01-2024**

Library: **01-01-2024**

Board: **01-01-2024**

Component: **01-01-2024**

Library: **01-01-2024**

Board: **01-01-2024**

Component: **01-01-2024**

Library: **01-01-2024**

Board: **01-01-2024**

Component: **01-01-2024**

Library: **01-01-2024**

Board: **01-01-2024**

Component: **01-01-2024**

Library: **01-01-2024**

Board: **01-01-2024**

Component: **01-01-2024**

Library: **01-01-2024**

Board: **01-01-2024**

Component: **01-01-2024**

Library: **01-01-2024**

Board: **01-01-2024**

Component: **01-01-2024**

Library: **01-01-2024**

Board: **01-01-2024**

Component: **01-01-2024**

Library: **01-01-2024**

Board: **01-01-2024**

Component: **01-01-2024**

Library: **01-01-2024**

Board: **01-01-2024**

Component: **01-01-2024**

Library: **01-01-2024**

Board: **01-01-2024**

Component: **01-01-2024**

Library: **01-01-2024**

Board: **01-01-2024**

Component: **01-01-2024**

Library: **01-01-2024**

Board: **01-01-2024**

Component: **01-01-2024**

Library: **01-01-2024**

Board: **01-01-2024**

Component: **01-01-2024**

Library: **01-01-2024**

Board: **01-01-2024**

Component: **01-01-2024**

Library: **01-01-2024**

Board: **01-01-2024**

Component: **01-01-2024**

Library: **01-01-2024**

Board: **01-01-2024**

Component: **01-01-2024**

Library: **01-01-2024**

Board: **01-01-2024**

Component: **01-01-2024**

Library: **01-01-2024**

Board: **01-01-2024**

Component: **01-01-2024**

Library: **01-01-2024**

Board: **01-01-2024**

Component: **01-01-2024**

Library: **01-01-2024**

Board: **01-01-2024**

Component: **01-01-2024**

Library: **01-01-2024**

Board: **01-01-2024**

Component: **01-01-2024**

Library: **01-01-2024**

Board: **01-01-2024**

Component: **01-01-2024**

Library: **01-01-2024**

Board: **01-01-2024**

Component: **01-01-2024**

Library: **01-01-2024**

Board: **01-01-2024**

Component: **01-01-2024**

Library: **01-01-2024**

Board: **01-01-2024**

Component: **01-01-2024**

Library: **01-01-2024**

Board: **01-01-2024**

Component: **01-01-2024**

Library: **01-01-2024**

Board: **01-01-2024**

Component: **01-01-2024**

Library: **01-01-2024**

Board: **01-01-2024**

Component: **01-01-2024**

Library: **01-01-2024**

Board: **01-01-2024**

Component: **01-01-2024**

Library: **01-01-2024**

Board: **01-01-2024**

Component: **01-01-2024**

Library: **01-01-2024**

Board: **01-01-2024**

Component: **01-01-2024**

Library: **01-01-2024**

Board: **01-01-2024**

Component: **01-01-2024**

Library: **01-01-2024**

Board: **01-01-2024**

Component: **01-01-2024**

Library: **01-01-2024**

Board: **01-01-2024**

Component: **01-01-2024**

Library: **01-01-2024**

Board: **01-01-2024**

Component: **01-01-2024**

Library: **01-01-2024**

Board: **01-01-2024**

Component: **01-01-2024**

Library: **01-01-2024**

Board: **01-01-2024**

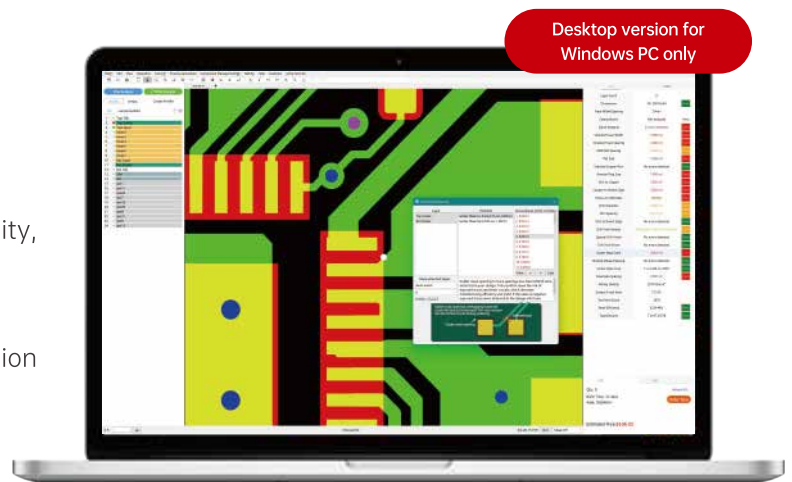
Component: **01-01-2024**

Library

Empower your engineers and streamline production with actionable insights

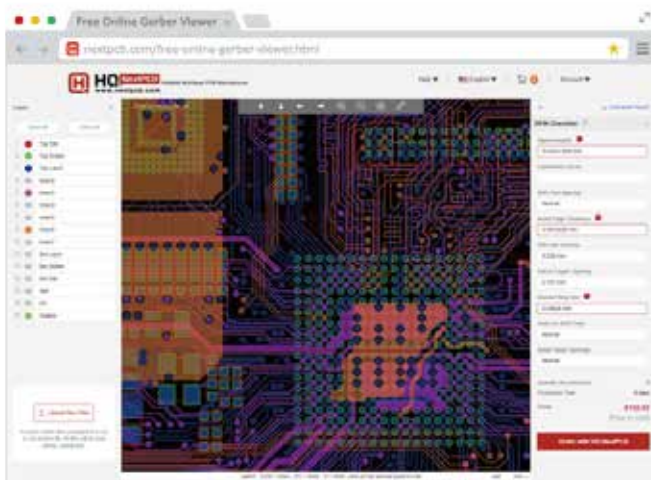
Why DFM?

- ✓ Discover and address errors in advance
- ✓ Optimize designs for reliability, manufacturability, cost and lead time
- ✓ Reduce file review delays and miscommunication between designer and fab house



Download now at nextpcb.com/dfm 

Try the online Gerber Viewer version at NextPCB.com



- ✓ Quick and accurate Gerber Viewer based on HQDFM
- ✓ Supports top 5 browsers
- ✓ No download, no registration required, just drag and upload
- ✓ Free downloadable DFM report
- ✓ Easy one-click ordering with HQ NextPCB



**We look forward
to working with you**

Write to us vipsales@nextpcb.com





Jiujiang, Jiangxi

Mass production PCB factory

Changsha, Hunan

Mass production PCB assembly
12000m² components warehouse

Chenzhou, Hunan

Mass production PCB assembly

Dongguan, Guangdong

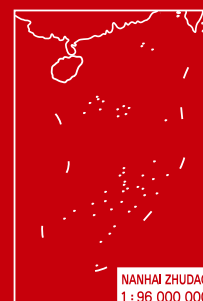
Prototype and small batch PCB assembly
5000m² components warehouse

Shenzhen, Guangdong

Headquarters
Prototype and small batch PCB factory

Hong Kong

Hong Kong offices





深圳华秋电子有限公司
Shenzhen Huaqiu Electronics Co., Ltd.

📍 深圳市福田区新一代产业园1栋5楼

5F, Building 1, New Generation Industrial Park, Futian District, Shenzhen, China

☎ +86 75583643663 ✉ vipsales@nextpcb.com

🌐 www.nextpcb.com 🌐 www.hqonline.com